

OCTOBER 2021 FEELING THE FREEDOM

AUSTRALIAN

DREAMY GARDENS *by Richard Unsworth and Ian Barker*

HOUSE & GARDEN

FEELING THE *freedom*

BRIGHT SUNSHINY DAYS WITH **DEBORAH HUTTON**



AUSTRALIAN HOUSE & GARDEN

10

OCTOBER \$8.80 *NZ\$9.50 (*incl. GST)

9 13 13006 1000709 1

are media

MATERIAL WORLD
reclaim
RE-COVER
redecorate

100+ *individual* pages of INTERIORS

ADELAIDE • MELBOURNE • SYDNEY • MERMAID BEACH

SURPRISE PACKAGE

A contemporary extension has imbued a 1900s house in Adelaide with a fresh look and wonderful new functionality.

STORY Sarah Pickette | PHOTOGRAPHY Caroline Cameron

REAR EXTENSION A picture window on the upper level allows a view out from the daughters' living area. The home's bagged-brick walls are painted Resene Truffle. They sit alongside render in Resene Half Truffle and steel columns powdercoated Dulux Powered Rock. A row of ornamental pear trees is set among Pietra Grigio pavers from Granite Works Australia. Tait 'Volley' lounge chair from Estilo Commercial and pool by Elite Pools and Landscapes.

LIVING AREA Herring sofa by Nonn and Partition coffee table (left), both from District. Herman Miller 'Crosshatch' lounge chairs, Living Edge. Bosco rug from Tribe Home. The curtains are in Westbury Textiles Antique Linen and made by Heritage Window Treatments. Ligne Roset 'Oxydation' low table, available from Domo.
REAR EXTENSION The tall glass doors and windows in the extension were custom-made for Williams Burton Leopardi by South Pacific Aluminium Windows and Doors.



When homeowners Belinda and Peter first came across this Adelaide home they weren't entirely convinced it was the one for them. Built in the 1900s, the house had an interesting history and occupied a lovely corner block, but they could see it needed quite a bit of work. So before they bought, the pair asked architect David Burton of Williams Burton Leopardi to take a quick look to see what he made of the property.

"I thought it had potential," says David. "It had some oddly arranged rooms, but it was well preserved." With David's nod, Belinda and Peter purchased the property in late 2017 and engaged Williams Burton Leopardi to extend the house to better meet the needs of the couple and their daughters, Sophie, 26, and Francesca, 24.

Central to David's plan was that the daughters have their own 'wing', situated above the garage. "We were working on the assumption they won't be using this space for all that many more years, so when they do move out it can simply be closed off." The existing 1950s rear extension was removed and in its place a gloriously light-flooded kitchen, living and dining area added. ▶



“THE NEW AREAS ARE SIMPLY A JOY TO SPEND TIME IN.” Belinda, homeowner



Paint colours are reproduced as accurately as printing processes allow.



HALL Doors custom-made by Adelaide Steel Frame Windows define the view through to the living room. **KITCHEN** The island has a concrete top made by Adelaide Outdoor Kitchens that sits on fluted concrete panels constructed by builder Ikon Projects. Iva stools, Grazia & Co. Superwhite dolomite splashback, Adelaide Marble Specialists. Tundra Grey limestone floor tiles, Granite Works Australia. **LIVING AREA** Black oak-veneer cabinetry by Proform Joinery ensures the TV doesn't dominate. *Onetree Hill* artwork by Caroline Cameron. Lola armchair, Jordan. ▶

THE PALETTE

Resene Truffle (exterior)	Dulux Natural White (hallway)	Dulux Ghosting (formal dining)
------------------------------	-------------------------------------	-----------------------------------

FORMAL DINING A Gubi 'Half Moon' table from Cult Design is surrounded by Verpan 'Series 430' chairs from Great Dane. The existing fireplace was restored. Apparatus 'Cloud 19' chandelier, Criteria. **FORMAL LIVING** Cockatoo #16, Backyard Newcastle, NSW, 2011 by Trent Park hangs over the mantelpiece. Phoenix sofa, Arthur G. Baxter 'Gemma' armchair, Criteria. Glitz rug, The Rug Collection.

THIS IS THE LIFE

"Our formal rooms are so elegant and comfortable – we embrace any excuse to use them," says homeowner Belinda. These rooms contrast beautifully with the lighter, airier new spaces. "This is a house that's so calm and inviting," she says. "It's a real haven." The family loves their new locale, which has now been thoroughly explored on foot with cavoodle Archie in tow. "There seems to be more dogs than people and everyone goes out walking – day or night, rain or shine."



From the street, the house nestles comfortably among its heritage-listed neighbours. Beyond its traditional return verandah is a formal entry hall, which opens on the left to a vast parents' suite that encompasses a large main bedroom, dressing room, ensuite and parents' retreat. "It's really quite palatial and not what you'd expect in a house of this size," says David. The result is truly beautiful, adds Belinda: "The colours and textures make the space feel restful and private, and it offers us different light and garden aspects at every turn."

On the other side of the hall is a study that's been kept deliberately dark and moody, and a formal sitting and dining room. Beyond this point, the new extension "bites into" the existing footprint, says David. "This portion of the house has the laundry, powder room and dining area all sitting under the old roof, but we have manipulated these spaces significantly."

All this spatial adjustment has paid off handsomely, with the north-facing rear extension presenting as a "slow burn", according to David. "We don't want our work to be like a sugar hit; we prefer to design spaces that develop a little more slowly." Soaring, neatly symmetrical glazing ensures the open-plan layout feels elegant yet voluminous, and it establishes a strong connection with the garden.

The kitchen is tucked at the rear of this open-plan space and designed to not compete with the views outside. There's a subtle elegance that comes from its fluted concrete island, topped with more concrete, and its subdued cloudy limestone flooring – repeated in the visually light staircase that leads up to Sophie and Francesca's rooms.

Flowing on from the kitchen is the spectacular living area – a space that, from the beginning, was designed to be multifunctional. "This is a room where the family can spend time together. We worked hard to create a space where the television wouldn't dominate," he says.



David's solution was to set the screen against black joinery, where it blends in when it's not being watched. Above this spot, there are panels of translucent glass that still allow light in but block out glimpses of neighbouring houses.

The living area's glass doors open right out to the garden. "The layout and flow works so well and contributes so much to our enjoyment of the house," says Belinda. "Its relationship with the garden is perfect and, as the garden becomes even more established, we can see how it will work better and better."

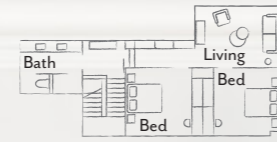
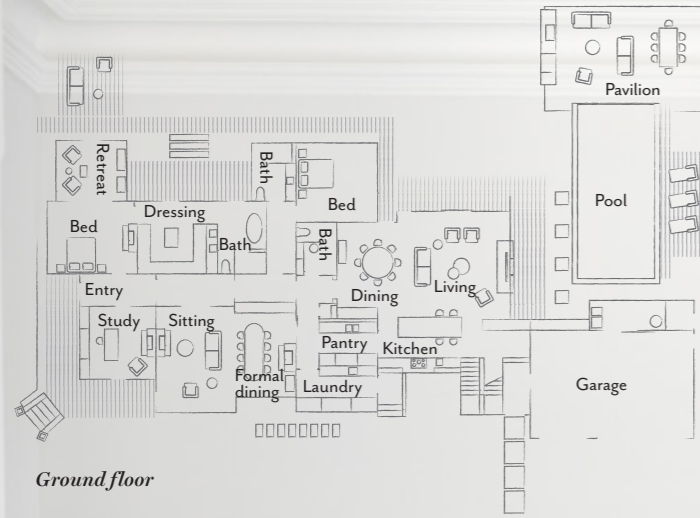
One of the materials that Belinda felt strongly about including in the renovation was the marble in the main ensuite. "It's very boldly grained and makes quite a

strong statement," says David. "The key was using it judiciously. Depending on where you're standing in the bathroom or adjoining rooms, it can either be quite noticeable or more subtle."

This house sees Belinda and Peter downsizing (their previous home was on a 3850-square-metre block) and they're delighted it does everything the family could need – and more. "It works so brilliantly for us and our daughters," says Belinda. "We all have our own space as well as rooms where we can come together. It was an elegant old house when we bought it and we feel we've more than done justice to it." ▶

Williams Burton Leopardi, Adelaide, SA; designbywbl.com.au.

THE LAYOUT



MAIN BEDROOM Lewis bed, Jordan. Bedlinen, Hale Mercantile Co. Pinch Design 'Harlosh' bedside table, Spence & Lyda. Atacama artwork by Caroline Cameron. Pendant light, Anna Charlesworth. **ENSUITE & DRESSING ROOM** Opposite Heavily veined Arabescato marble from Adelaide Marble Specialists is the star of the main ensuite. Tapware, Astra Walker. Apaiser 'Zen' bath, Routleys Bathroom Kitchen Laundry. Mokum 'Obi Eggshell' curtains made by Heritage Window Treatments. Joinery in the dressing room is American-oak veneer.





“THE WAY THE OLD AND NEW PARTS OF THE HOUSE SIT TOGETHER IS DAVID’S MASTERSTROKE.” Belinda

ENTRY *Top left* Liam Mugavin’s ‘Chair C’ from Criteria sits by the key-drop area. Artwork by Caroline Cameron. **EXTERIOR** *Above and left* The original house and its extension knit together neatly at this juncture; the hen-pecked sandstone blocks date back to the 1900s. The side fence is made from blackbutt battens. Endicott cobblestones, Eco Outdoor. Landscaping by Distinctive Gardens.



1 Royal Comfort ‘Eden’ 8-piece towel set, \$30, Harvey Norman. 2 Stone-composite surface in White Attica, from \$600/m², Caesarstone. 3 Cloud 37 pendant light, POA, Criteria. 4 LSA International ‘Boulder’ vase, \$325, Amara. 5 Luxotic silk eye mask, \$39.95, Harvey Norman. 6 Mono Portion III wall art, \$2175 (framed), Boyd Blue. 7 Labyrinth Collection marble tiles by Steve Cordony, \$42/305x305mm sheet, Di Lorenzo Tiles. 8 Vermont 3.5-seater sofa, from \$4995, Coco Republic. 9 Snoopy table lamp by Achille & Pier Giacomo Castiglioni, \$1990, Living Edge. 10 Eames Walnut stool C by Charles and Ray Eames, \$1890, Living Edge. 11 Chaplin mirror, \$348, House of Isabella. 12 Electric Dreams vase, \$240, Greg Natale. *For Where to Buy, see page 196. H&G*

THE SOURCE

White can make a house feel fresh again regardless of its era. Soft fabrics and warm metallics keep things cosy.



Produced by Saffron Sylvester.