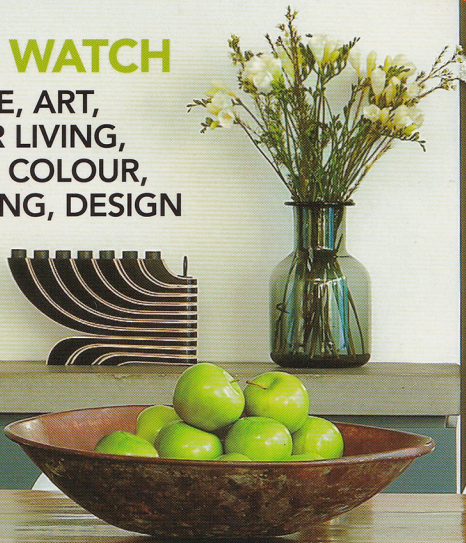


# Adelaide<sup>#</sup> living

CREATIVE IDEAS FOR SOUTH AUSTRALIAN HOMEMAKERS

## TREND WATCH

FURNITURE, ART,  
OUTDOOR LIVING,  
LIGHTING, COLOUR,  
RENOVATING, DESIGN



CELEBRITY CHEF  
**SIMON BRYANT**  
SHARES THE SECRETS OF  
HIS THRIVING GARDEN

The Advertiser  
LAUNCH ISSUE 2010

**WIN!**  
YOUR OWN  
ARCHICENTRE  
HOME DESIGN  
WORTH \$2640

FOUR LOCAL  
HOMES WITH  
LOADS OF  
**WOW  
FACTOR**



WHAT'S  
HOT  
RIGHT  
NOW

DISCOVER THE KEY TO RETRO CHIC PLUS  
STUNNING KITCHENS AND BATHROOMS

ISSUE 1 \$9.95  
ISBN 978-0-9808269-0-6  
  
9 780980 826906



Meet three of the most creative talents  
on Adelaide's design landscape

# INTERIOR MOTIVES

words kylie fleming photography randy larcombe

## INSIDE STORIES

WHILE SOME WOMEN LUST AFTER HIGH-END HANDBAGS OR EXPENSIVE BLING, INTERIOR DESIGNER SOPHIA LEOPARDI DREAMS OF OWNING A VINTAGE 1950s DANISH CHAIR

"I'd consider selling one of my organs to get a PP225, the Flag Halyard Chair, which was designed by my favourite furniture designer, Hans J. Wegner," says Sophia Leopardi.

Sophia, who has worked in interior design at progressive architectural firm Williams Burton since 2003, is emerging as one of Adelaide's most exciting creative professionals.

The UniSA Bachelor of Architecture graduate has conceived stylish spaces for boutique cellar doors and sleek commercial offices, but says her true passion lies with residential interiors.

"I love the client interaction with residential projects. It's a personal process, it's the house or the extension people have been waiting for," says Sophia, 30. "Their story is part of it and I get a real buzz seeing people love the final result."

One of her favourites is the former home of her friends, gallery owner Hugo Michell and his wife, Brooke, in Rose Park. Sophia, who majored in furniture at university, designed a one-off American ash chest of drawers called Heart Shape Box for the couple. The project secured Sophia and Williams Burton two 2009 Design Institute of Australia South Australian Design Awards commendations in the Built Environment and Object categories.

Sophia lives in Glenelg East with her partner, Brett Linford, and their dog, Cooper. She says Adelaide is a great work base, but that designers here need to work harder to keep ahead of trends.

"To be a creative person in Adelaide you need to be open to ideas, you need to be active, always looking and researching, because we don't have all the major design showrooms just down the street," she says. "Without the internet I'd be in the foetal position in the corner."

"You need mentors, too. We've got a person here like Khai Liew producing world-class designs from Adelaide, so we've got no excuses – it can be done here. Creativity and good design are not limited by your location."