

AUSTRALIAN

HOT COLOURS FOR NOW: CHOCOLATE, ROSE, SAGE AND BRASS

HOUSE & GARDEN

THE POWER
OF FLOWERS

*Blooms for
fashion and
interiors*



GET
GARDENING
AUSTRALIA

*Two glorious
spaces to
inspire*

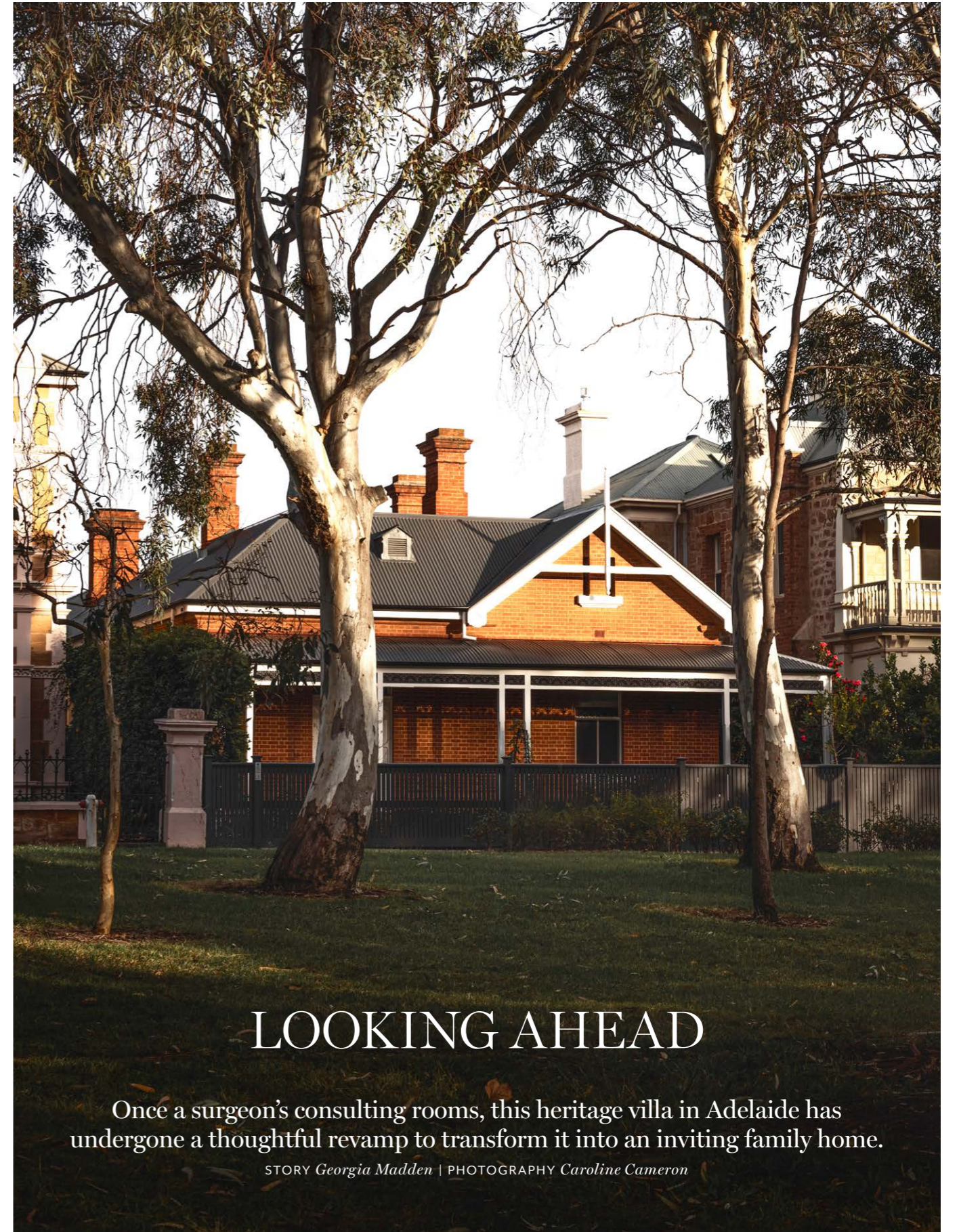
120+
pages
of

*Bold new interiors
for a fabulous 2023*



H&G HOUSES

REAR EXTENSION Steel-framed doors and windows, Dynamic Engineering and Maintenance (throughout). The James Hardie 'Axon' cladding on the first floor is painted Resene Grey Friar. The rear of the original home is rendered in Dulux Linseed. Endicott pavers, Eco Outdoor. **FRONT FACADE** The heritage home was restored, repointed and refreshed with new paint and roofing in Colorbond Woodland Grey.



LOOKING AHEAD

Once a surgeon's consulting rooms, this heritage villa in Adelaide has undergone a thoughtful revamp to transform it into an inviting family home.

STORY *Georgia Madden* | PHOTOGRAPHY *Caroline Cameron*

MAIN ENTRY The chandelier, a fixture in the owner's previous home, is perfectly suited to its new location. Engineered-oak flooring, Woodcut (throughout). **SIDE ENTRY** *Opposite left* Endicott pavers, Eco Outdoor. Artwork by Tate Adams. Wall clad in Super White dolomite, CDK Stone. Pendant light, Apparatus. **KITCHEN/DINING** *Opposite right* The island is finished in Super White dolomite from CDK Stone. City Stik mixer tap, Brodware. Oven, Miele. Painting by Ildiko Kovacs and sculpture by Sam Gold, both from Hugo Michell Gallery. Vase from JamFactory.



For 40 years, the surgeon owner of this early 20th-century, heritage-listed villa near Adelaide's CBD used the home as consulting rooms. Upon retirement, he called on architect David Burton and interior designer Sophia Leopardi, directors of Williams Burton Leopardi, to help him transform the somewhat featureless former workspace into an inviting dwelling he could enjoy with his children and grandchildren.

"The renovation was something of a new beginning for the owner so it stirred up quite a lot of emotions," says Sophia. "He wanted a home that honoured the past and also had space for the family to create new memories together. It had to be comfortable, relaxed and robust - a place his grandchildren could bounce off the furniture without anyone worrying about it."

Situated in one of the most coveted residential areas of Adelaide, the three-bedroom, single-storey residence sits in a row of stately properties that overlook expansive parklands. "Its neighbours are very grand two-storey houses but it easily holds its own - it's beautiful," says David. A lifetime spent working in the dwelling gave the owner an intimate understanding of both its best features and its shortcomings, which helped inform the new design of the interior. "He had a deep appreciation of how the light travelled through the spaces and the different possibilities for the various rooms," says David.

The idea was to retain the two original front rooms - once the consulting room and waiting room, now the main bedroom and a sitting room - and replace a rundown 1970s lean-to at the rear with a sleek new extension housing a kitchen/dining/living area that flows through to the rejuvenated garden. The spaces also needed to comfortably accommodate large family gatherings without being overwhelming for one.

"The challenge was making sure front and rear didn't feel like two separate houses," says David. "To achieve this, we used a consistent colour palette and incorporated transitional spaces to smooth the progression between old and new. The owner's existing furniture is dotted throughout as well, which creates an additional unifying thread."

The dark and characterless corridors in the original part of the house were brightened with a long, slender skylight. The owner's extensive art collection, now with updated frames, delivers colour and personality. Meanwhile, a new opening to the hallway with glazed doors draws light into the formal dining room. "Everything about the front portion of this house was carefully analysed for the way light was going to bounce around it," says David.

Two bedrooms on the northern side of the house were retained - one enlarged - while the original kitchen made way for a study, family bathroom and a small wine room. ▶

A spacious open-plan kitchen/dining area sits at the heart of the new extension. “We oriented the kitchen in a slightly peculiar way so that it gets a view down the side of the house – this allows the owner to look directly out to the parkland at the front when he’s preparing breakfast,” says David. A “friends’ entrance” opens directly into this space too.

Throughout the home, a gentle palette of neutral tones and softly patterned stone creates a sense of calm. “We purposely dialled back the colours to create a recessive backdrop for the owner’s quite ornate antiques and light fittings that he was bringing with him from his previous home. We didn’t want the rooms to feel museum-like, so we chose tones with some warmth to make them more inviting,” says Sophia.

The owner’s art and furniture has been cleverly used to knit the old and new parts of the house together. “It was about

bringing a few of the traditional elements into the new addition and, likewise, injecting some contemporary elements in the original spaces,” says Sophia. “We added beautiful new window treatments and reinstated select light fittings from the owner’s family home in the dining room, sitting room, main bedroom suite and entry hall. In the new extension, a sideboard from his previous home sits on a new marble plinth beside the fireplace, along with a few treasured decorative pieces displayed on the shelves.

“The home now feels thoughtful, calm and considered, just like its owner,” she adds. “There’s a real sense that it honours its history while looking forward to the future.”

Williams Burton Leopardi, Adelaide, SA; (08) 8223 1177; designbywbl.com.au. Bower Construction & Design, Adelaide, SA; bowerconstruction.com.au.

“The kitchen is oriented so the owner can look directly out to nearby parkland.”

DAVID BURTON, ARCHITECT

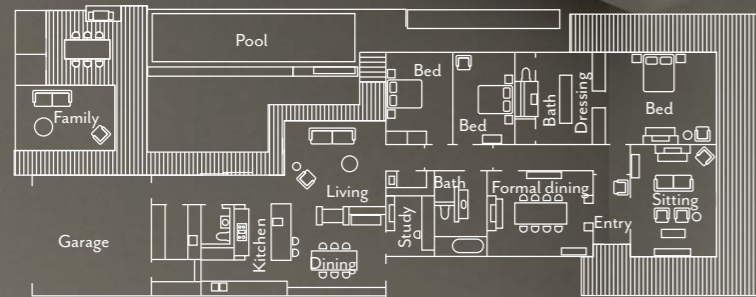


THIS IS THE LIFE

This house has been designed for the owner to enjoy now, but he was very keen that it could be enjoyed by all ages, says Sophia. “He’s conscious that it may be a family home in future, so there were lots of discussions about how spaces would work at different stages of life. He invited his children to be part of the design process, which has helped it become a truly multigenerational home.”

KITCHEN/DINING Island, wall-side benchtop and splashback in Super White dolomite from CDK Stone. City Stik mixer tap, Brodware. Arrow pendant light, Apparatus. Painting by Ildiko Kovacs and sculptures (on island and on sideboard) by Sam Gold, both from Hugo Michell Gallery. New Works Core table lamp, Aura Objects. Dining table by Built Furniture. &Tradition ‘Pavilion’ dining chairs, Cult Design.

THE LAYOUT



FORMAL DINING Original fireplace. The antique Scottish dining table and chair were fixtures in the owner's previous home. Custom curtains in Mokum Satori Blush by Heritage Window Treatments. The artworks are c.1900 photos of Port Willunga Jetty by EL Fidge. **LIVING** Miller sofa and Boyd floor lamp, Jardar, Scatter Ball cushion, The Creative Muster, Pebble coffee tables, JamFactory. The Rug Establishment 'Lumiere Lichen' rug, Abode Living. Walls painted Dulux Natural White. ▶

THE PALETTE

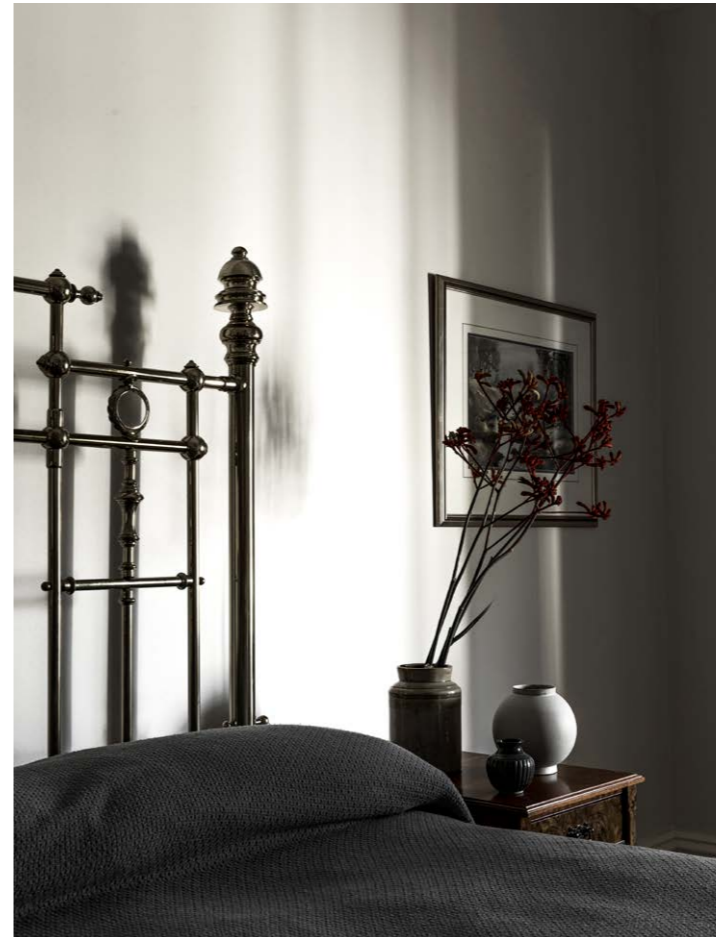
Resene Friar Grey
(rear exterior cladding)

Dulux Linseed
(rear exterior render)

Dulux Ghosting Quarter
(interior, throughout)

“There’s a real sense that the home honours its history while looking forward to the future.” SOPHIA LEOPARDI, INTERIOR DESIGNER

Paint colours are reproduced as accurately as printing processes allow.



MAIN BEDROOM Above The antique mahogany bed, antique table and Iranian runner are treasured pieces from the owner’s previous home. The 1920s pendant light was sourced from Mitcham Antiques. Watercolour paintings by Ivars Janssons. **THIS IMAGE** The design of the new garage ties in with the old stables, which have been converted into a separate family room/retreat. **MAIN ENSUITE** Opposite New Savior limestone floor tiles, benchtop and splashback, CDK Stone. Custom mirrored cabinet. Tapware and towel ring, Brodware. ▶



SITTING ROOM Custom curtains in Mokum Satori Linen, Heritage Window Treatments. C.2 lounge chair by Mathieu Cottin, Handmade & Found. Bobbin side table, Aura Objects. Antique dresser.



1

THE SOURCE

Timber and leather furnishings suit homes of all eras and grow ever more beautiful with age and use.



1 Linen House 'Leon' vase in Amber, \$50, Myer. 2 Foscarini 'Twiggy' floor lamp, \$2625, Space. 3 jazz artwork by Ildiko Kovacs, POA, Martin Browne Contemporary. 4 Aruba indoor/outdoor rug (200x290cm), \$890, Domayne. 5 Callai linen cushion, \$175, Coco Republic. 6 Estelle occasional chair, \$3490, Catalano. 7 Appellation 'Stone' essential oil diffuser, \$165, Hardtofind. 8 Westside sofa, POA, Poliform. 9 Jerome side table, \$109, Freedom. 10 Grand Bahama chest of drawers, POA, Xavier Furniture. For Where to Buy, see page 190. H&G